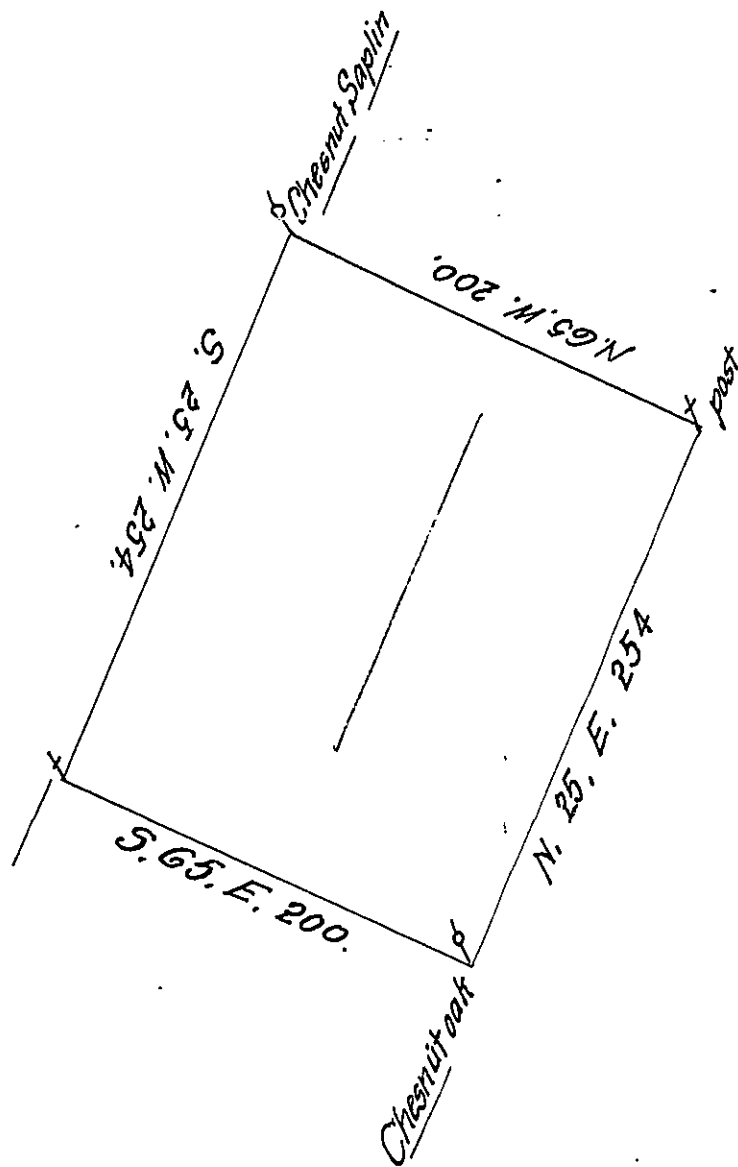


FORM No. 1.



Laid out to Conrad Riff in Right of Casper Wister a Tract of
 and Situate near Oley in the County of Philad^a Beginning
 at a Chestnut Saplin thence ^{by Vac^t land} S. 25. W. 254 perches to a post thence
 S. 65. E. by Vac^t land 200 perches to a Chestnut Oak thence by Vac^t land
 N. 25. E. 254 perches to a post thence by Vac^t land N. 65. W. 200 perches
 to y^e place of beginning Con^t. 300^{as} with usual allowance

Surveyd May 28th 1734 By

Nich^s Scull

Returned into the Secretary's Office
 the 25th of August 1733

IN TESTIMONY that the above is a copy of the original remaining on file in
 the Department of Internal Affairs of Pennsylvania, made
 conformably to an Act of Assembly approved the 16th day of
 February, 1833, I have hereunto set my Hand and caused
 the Seal of said Department to be affixed at Harrisburg,
 this Seventeenth day of November 1910.

Henry Houch
 Secretary of Internal Affairs.